

White Paper: Building Secure Software with Java

With rising threats of terrorism and other forms of asymmetric warfare, an emphasis on the security of software systems has increased dramatically. The common desire is to t...



Related Publications

Embedded

COMPUTING
DESIGN

Find:
Limit to White Papers

[ARTICLES & TOPICS](#)

[PRODUCT SEARCH](#)

[WHITE PAPERS](#)

[NEWSWIRE](#)

[PREFERRED VENDORS](#)

[E-CAST SCHEDULE](#)

[THE MAGAZINE >](#)

[TECHNOLOGY PARTNERSHIPS](#) [MORE](#)



ASSET's ScanWorks supports PLX Technology's PCI Express switch family's visionPAK diagnostic toolset

2 weeks 1 day ago

Richardson, TX (Nov. 4, 2009) – ASSET® InterTech, the leading supplier of open tools for embedded instrumentation for design validation, test and debug, and PLX Technology, Inc. (NASDAQ: PLXT), the leading global supplier of PCI Express® (PCIe®) switch and bridge silicon, today announced that ASSET's ScanWorks® platform for embedded instrumentation is supporting the exclusive PLX® visionPAK™ packet generator/system analyzer toolset.



ASSET InterTech
(click image to zoom by 3.4x)

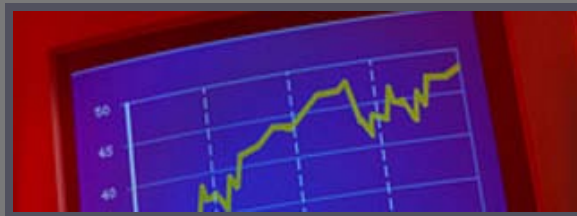
“visionPAK provides unique capabilities embedded in PLX PCIe devices helping users in system bring-up, board level testing and field debug,” said Akber Kazmi, director of marketing at PLX. “ASSET ScanWorks support will enable system manufacturers to use our on-board devices to test other components and interconnects of the system more rigorously with lower cost before they get shipped to the customers.”

PLX's visionPAK, supported by ASSET's ScanWorks platform, is an exclusive toolset of diagnostic and monitoring features that are integrated into all PLX PCIe Gen 2 and Gen 3 switches and focused on getting designs to market faster. visionPAK [hardware](#) features are offered standard via the PLX software design kit (SDK) and include tools to measure Rx eye-inside the device for validating signal integrity; a function to inject errors to check system behavior; a function to generate packets/traffic to saturate x16 PCIe Gen 2/3, loopback Tx to debug data paths, and the capability for monitoring packet performance.

“When integrated with ScanWorks using an IEEE P1687 approach, PLX's visionPAK provides printed circuit board (PCB) validation, test and debug functions to enhance the signal integrity and high-speed bus performance on circuit boards to detect manufacturing defects and process variances,” said Tim Caffee, ASSET's vice president of I/O instrumentation. “PLX has more than 65 percent of

White Paper: Three Proven Techniques for Improving Embedded Software

These days embedded developers are looking for new and cost-efficient methods to maximize the performance of their application while still maintaining a high level of design effici... [READ WHITE PAPER](#)



Stay a step ahead with

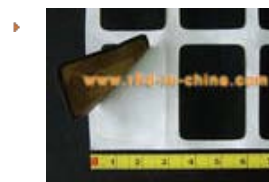
Embedded

COMPUTING
DESIGN

Related Resources

[Learn more](#)

Industry News: [ASSET InterTech...](#)



RFID File Tracking System optimizes file inventory management
7 months ago

▶ 134.2kHz Bio-Glass Tube RFID Tag with Injector for Animals
8 months ago

▶ UHF EPC Compliant RFID Passive Sheep Ear Tag
8 months ago

[More ASSET InterTech Industry News headlines...](#)

the PCIe switch market share, and providing standardized access to their on-chip instrumentation demonstrates a commitment to PCB manufacturing excellence for their customers.”

ScanWorks® – The Embedded Instrumentation Platform

ASSET, through its ScanWorks platform, is applying the experience it has gained from two decades as a leading supplier of boundary-scan test tools to the development of open embedded instrumentation tools. The boundary-scan infrastructure that is embedded into chips and circuit boards is one of several technologies that can form the basis for an embedded instrumentation toolset. In recent years, ASSET has significantly enhanced its ScanWorks® platform beyond boundary-scan test with the addition of other embedded instrumentation technologies, including processor-controlled test (PCT) and tools for Intel® IBIST (Interconnect Built-In Self Test), an embedded instrumentation technology that Intel® and other companies are embedding into next-generation chips and chipsets.

About ASSET InterTech

ASSET InterTech is the leading supplier of open tools for embedded instrumentation for design validation, test and debug. The ScanWorks platform provides automation, access and analysis tools in one environment. Users can quickly and easily validate and test semiconductors, circuit boards or entire systems during every phase of a product's life, including design, manufacturing/repair and field maintenance. ASSET InterTech is located at 2201 North Central Expressway, Suite 105, Richardson, TX 75080.

For product information, call 888-694-6250, fax 972-437-2826, e-mail ai-info@asset-intertech.com or visit www.asset-intertech.com.

#####

Media Contacts:

Bob Greenfield, G&A PR 972/254-2887 bob.greenfield@verizon.net

Alan Sguigna, ASSET 972/664-3105 asguigna@asset-intertech.com

Trademarks:

ASSET, the ASSET logo and ScanWorks are registered trademarks of ASSET InterTech, Inc. All other trade and service marks are the properties of their respective owners.

Source: [ASSET InterTech](#)

[Find ASSET InterTech products](#) (8 found)

ShareThis

- [Return to Embedded Computing Newswire](#)

MORE NEWS

- [CompactPCI and AdvancedTCA News](#)

Technology Partnerships: [ASSET InterTech...](#)

ASSET's ScanWorks supports PLX Technology's PCI Express switch family's visionPAK

diagnostic toolset
2 weeks ago

▶ Strategic relationship with SiliconAid extends ASSET's ScanWorks platform into chip test and verification
2 weeks ago

▶ Cray selects ASSET's ScanWorks platform for embedded diagnostics in next-generation supercomputers -- Contract calls for two companies to collaborate on embedded test logic
3 months ago

[More ASSET InterTech Technology Partnerships headlines...](#)

Contracts: [ASSET InterTech...](#)

▶ GAO Recommends Its Multifunctional RFID Portal Series
10 months ago

▶ 12 de Octubre Hospital Deploys Ekahau Positioning Engine and Tags with Panic Button to Support Security of Emergency Room Personnel
1 year ago

▶ TRI Integrates ASSET's ScanWorks Boundary-scan Technology into its Test Systems
1 year ago

[More ASSET InterTech Contracts headlines...](#)

New Products: [ASSET InterTech...](#)

▶ Flynn Systems Releases new HighSpeed USB JTAG Test and Programming Cable for onTAP(r)

- [PC/104 and Small Form Factor News](#)
- [DSP and FPGA News](#)
- [Military Embedded Systems News](#)
- [PXI, Testing and Instrumentation News](#)
- [Industrial Embedded Systems News](#)
- [Linux News](#)

This area is undergoing maintenance and will return shortly.

Comments

Showing 0 comments

Sort by [Popular now](#) [Subscribe by email](#) 

[Subscribe by RSS](#)

Add New Comment 

You are commenting as a [Guest](#). Optional: [Login below](#).

-  DISQUS
-  Connect
-  Twitter
-  OpenID

[Subscribe to all comments](#)

Trackback URL



Boundary Scan Software

2 months ago

- ▶ [ASSET's Dispatcher for ScanWorks applies tests simultaneously to an unlimited number of circuit boards](#)
3 months ago
- ▶ [ASSET ScanWorks platform is first to support both validation and test for new Intel Xeon processor 5500 series](#)
6 months ago

[More ASSET InterTech **New Products** headlines...](#)

People: [ASSET InterTech...](#) 


- ▶ [Dehne, longtime National Instruments executive, joins ASSET's Board of Directors](#)
5 months ago


[More ASSET InterTech **People** headlines...](#)

Mergers and Acquisitions: [ASSET InterTech...](#) 

- ▶ [Fluensee Acquires TrenStar Tracking Solutions](#)
1 year ago

[More ASSET InterTech **Mergers and Acquisitions** headlines...](#)

Conferences and Awards: [ASSET InterTech...](#) 

- ▶  [ASSET Remote Instrumentation Controller named Best In Test Finalist for 2009 First JTAG controller capable of applying tests over the Internet earns ASSET fourth 'finalist' honor in six years](#)
9 months ago

▶ [Active RFID in China](#)

1 year ago

▶ [ASSET's Innovative Design-for-Test Tool, DFT Analyzer, Named Finalist for IEC DesignVision Award](#)

2 years ago

[More ASSET InterTech **Conferences and Awards** headlines...](#)

Media and Education: [ASSET InterTech...](#)



▶ [New Boundary-Scan Tutorial Offers Expanded Information on Complementary Technologies](#)

2 years ago

[More ASSET InterTech **Media and Education** headlines...](#)



The most recent ASSET InterTech related headlines are currently shown above.

[Expand this list](#)

Want full-text news stories delivered daily via e-mail?

Enter your e-mail address:

Delivered daily by [FeedBurner](#)



©MMIX *Embedded Computing Design*.
An OpenSystems Media publication.

See Also:

[Military Embedded Systems](#)
[Industrial Embedded Systems](#)
[CompactPCI and AdvancedTCA Systems](#)
[PXI, Test & Technology](#)
[VME and Critical Systems](#) and [VMEnow.com](#)
[DSP-FPGA.com](#)
[PC/104 and Small Form Factors](#)

[Subscribe](#) | [Contact Us](#) | [About this Magazine](#) | [Media Kits](#)