

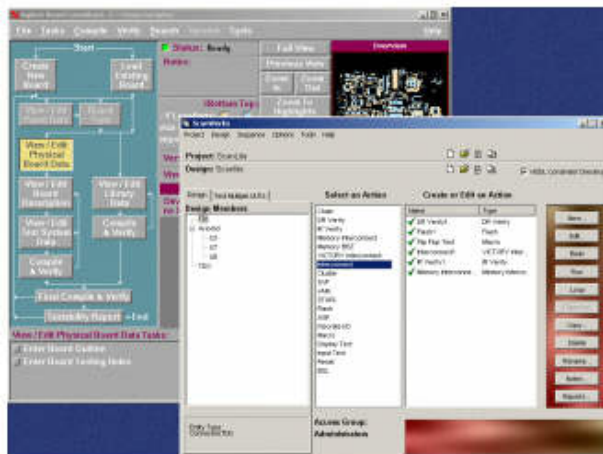
Test re-use from design to manufacturing slashes cost, speeds products to market faster

Agilent and ASSET offer a cohesive line of boundary-scan re-use solutions for benchtop and in-circuit test systems

Agilent and ASSET have developed a complete product line supporting test re-use from benchtop ASSET ScanWorks® test stations in design and manufacturing to any Agilent 3070 ICT system in high-volume manufacturing. The various ScanWorks for the 3070 solutions offer a range of price/performance options that meet your needs today and accommodate upgrades in the future as your boundary-scan test operations grow. ASSET and Agilent are the only boundary-scan and ICT firms to form a strategic partnership and support their joint re-use solutions worldwide. No other boundary-scan re-use solution is supported by Agilent or any other ICT supplier.

A number of factors will determine which ScanWorks for the 3070 solution will be right for you. These factors include the configuration of your Agilent 3070 system, the volume of your boundary-scan test and programming operations, and any sort of budgetary constraint you may be operating under. The chart below shows which solutions are available for the various Agilent 3070 configurations.

Agilent ICT configurations	ScanWorks for the 3070 Solutions	Support
3070 UNIX Controller	Externally Integrated	ASSET provides frontline support with backup from Agilent
3070 with Dual PC and UNIX Controllers	Internally Integrated	ASSET provides frontline support with backup from Agilent
3070 PC Controller	Fully Integrated	Agilent provides frontline support with back up from ASSET.



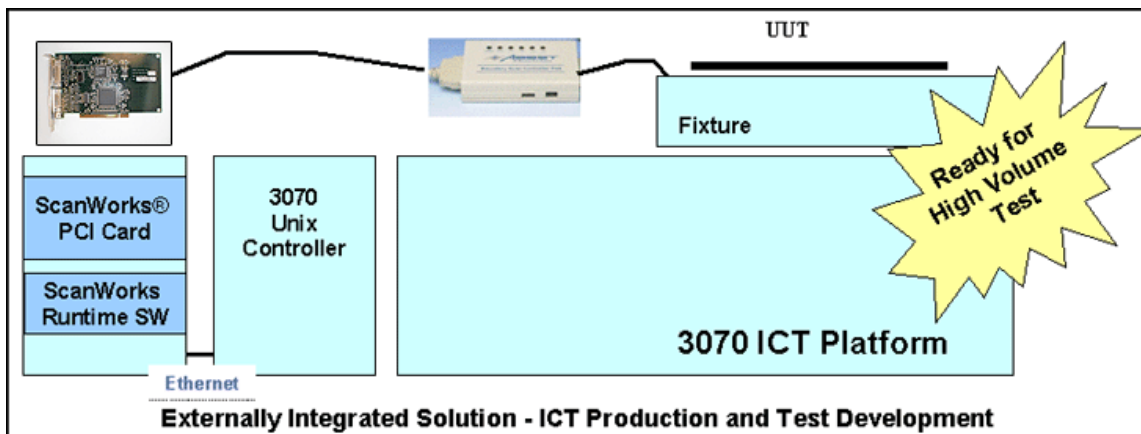
ScanWorks for the 3070 Externally Integrated Solution

The ScanWorks for the 3070 Externally Integrated Solution is available for Agilent 3070 systems with UNIX controllers. The ScanWorks for the 3070 Externally Integrated Solution is particularly cost-effective for firms whose volume of boundary-scan test is increasing and gaining momentum.

The ScanWorks for the 3070 Externally Integrated Solution involves a low-investment PC-based ScanWorks Manufacturing Station, which provides basic benchtop boundary-scan test and programming while acting as the platform for test re-use operations on the 3070 UNIX system via a network connection. This solution is composed of a standard ASSET ScanWorks Manufacturing Station with a PCI-100 hardware kit and software to interface ScanWorks and a 3070 UNIX system over a network. With the Scanworks for the 3070 Externally Integrated Solution, test sequences developed for a ScanWorks Manufacturing Station can be run on the 3070 UNIX ICT system. Pass/fail test results as well as failure information are displayed on the 3070.

To deploy the ScanWorks for the 3070 Externally Integrated Solution for UNIX-based 3070 systems, several calls are added to the test program to interface ScanWorks and the 3070 over an Ethernet network. Included with the ScanWorks for the 3070 Externally Integrated Solution is an application note with source code examples for programming the 3070 and interfacing ScanWorks hardware to a 3070 fixture, as well as all other information that might be needed for a successful implementation.

Financial considerations are associated with this cost-effective ScanWorks for the 3070 Externally Integrated Solution so users will be able to maximize the return on their initial investment when they migrate later as their boundary-scan test volumes increase to the ScanWorks for the 3070 Fully Integrated Solution.



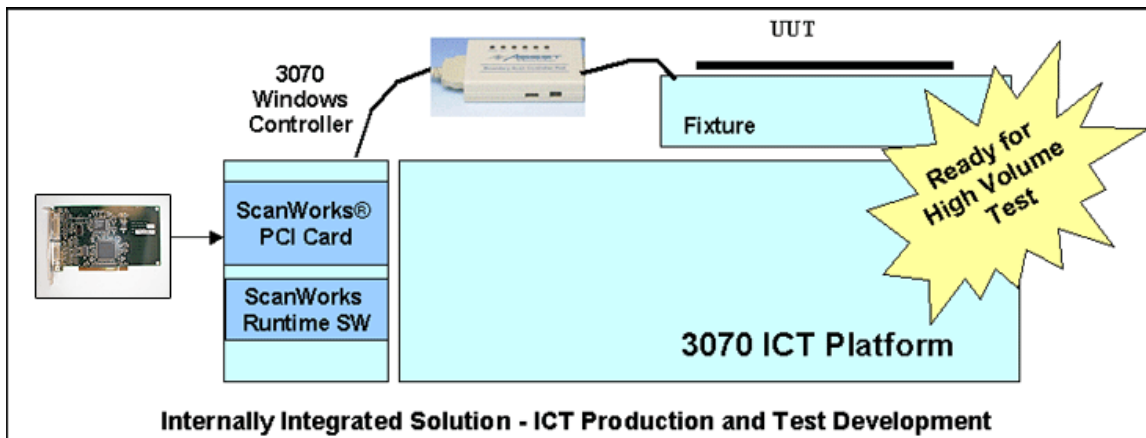
ScanWorks for the 3070 Internally Integrated Solution

Some Agilent 3070 users must continue to run legacy 3070 UNIX tests as they migrate new tests to the 3070 PC controller. As a result, Agilent supports a dual-controller

strategy through which one bed-of-nails 3070 test head interfaces to both a 3070 UNIX controller and a 3070 PC controller. The ScanWorks for the 3070 Internally Integrated Solution is available for these users.

The ScanWorks for the 3070 Internally Integrated Solution combines the Externally Integrated configuration describe above for 3070 systems when the UNIX controller is functioning with an internal integration whereby ScanWorks software tools are integrated onto the 3070's internal PC controller.

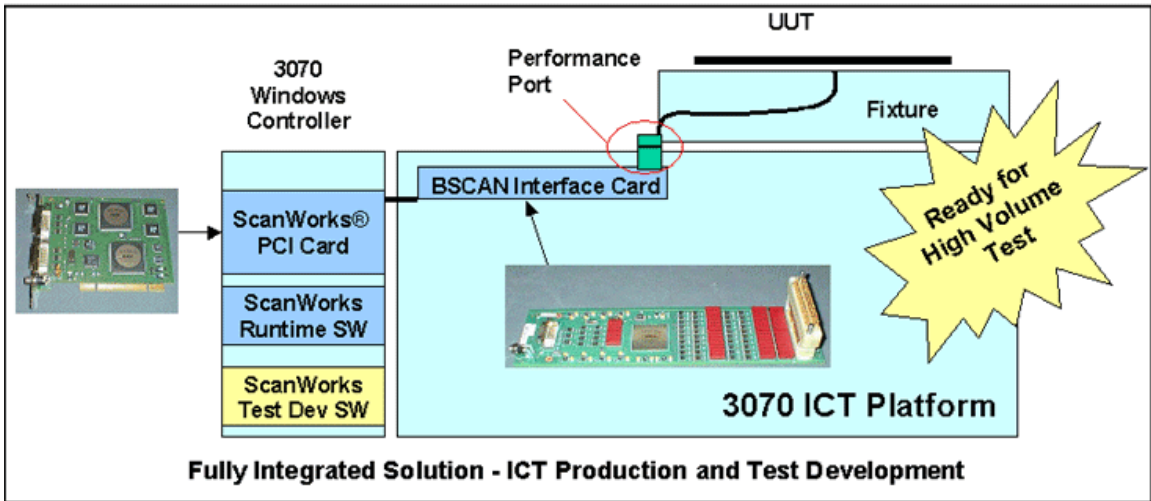
Financial incentives are provided to ensure a maximum return on investment in either the ScanWorks for the 3070 Externally Integrated or the ScanWorks for the 3070 Internally Integrated solutions for those users who, because of their increasing volume of boundary scan test and programming operations, eventually migrate at a later time to a ScanWorks for the 3070 Fully Integrated Solution.



ScanWorks for the 3070 Fully Integrated Solution

Users who have an Agilent 3070 with a PC controller or who have upgraded a 3070 UNIX controller to a PC controller can take advantage of the ScanWorks for the 3070 Fully Integrated Solution. This configuration seamlessly integrates a full ScanWorks Manufacturing Station onto the 3070 PC controller for a “best-in-class” solution. The fully integrated solution features ASSET’s high-performance PCI-400 controller card which supports four test access ports (TAPs). Unlike the single TAP PCI-100s of the Externally and Internally Integrated solutions, the PCI-400 can interface ScanWorks to as many as four units under test (UUT) for significantly greater test throughput. Moreover, because a complete ScanWorks Manufacturing Station is seamlessly integrated into the 3070, the fully integrated solution can take advantage of more of the automation features of ScanWorks. And the integration of a complete ScanWorks system also allows for a more effective test re-use flow from a ScanWorks system in development to a ScanWorks for the 3070 Fully Integrated Solution in manufacturing. In addition, all of the diagnostic capabilities of ScanWorks are included in the Fully Integrated ScanWorks for the 3070 while pin-level diagnostics is only included as an option in the Externally

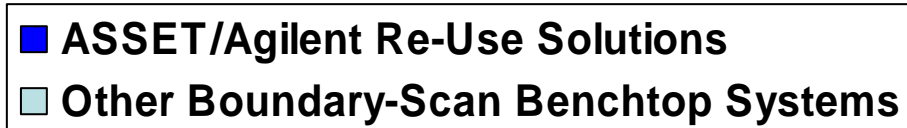
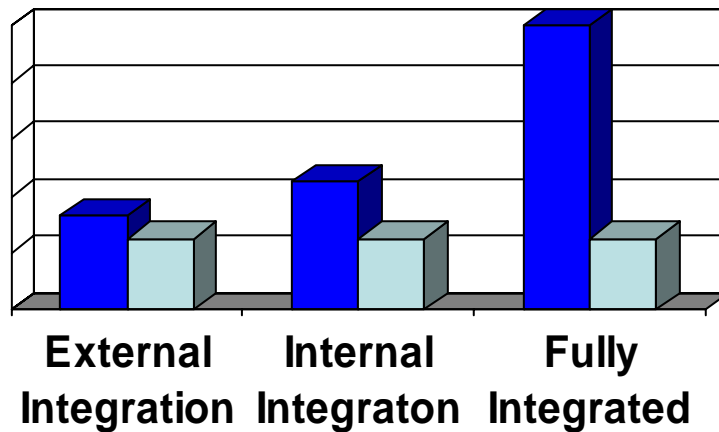
and Internally Integrated Solutions. The ScanWorks for the 3070 Fully Integrated Solution is available exclusively from Agilent Technologies. The diagram below illustrates this configuration.



Easy, Affordable, Powerful

The integrated ScanWorks for the 3070 test re-use solutions are unmatched in the industry. The graph below clearly demonstrates the affordability and increasing performance of each configuration.

Performance-to-Price for Re-use Solutions



As described previously in each of the product sections, the graph above clearly demonstrates how the price/performance ratio of each ScanWorks for the 3070 solution improves as users migrate from the Externally Integrated to the Internally Integrated and ultimately the Fully Integrated Solution. Whereas other boundary scan ICT re-use products offer only a single non-scalable solution, ScanWorks for the 3070 offers solutions that are scalable to the needs of every user no matter what their volume of boundary scan test, the size of their manufacturing operations or the configuration of their 3070 systems.

For more information...

Recent customer success stories concerning boundary-scan test re-use by Lucent Technologies and Jabil Circuit, Inc., are available on the Agilent web site at <http://www.agilent.com/see/3070>.

More information on the various configurations of ScanWorks for the 3070 is available on the ASSET website at <http://www.asset-intertech.com/scanworks3070.html>.

Please contact your local ASSET or Agilent representative if you have questions or comments about the new ScanWorks for the 3070 solutions.