

ASSET INTERTECH

PROCESSOR-CONTROLLED TEST DEVELOPMENT STATION

ASSET InterTech is excited to introduce Processor-Controlled Test (PCT) Development Station. This software release is uniquely configured to aid in the task of functional test development. The user interface has been enhanced to help with the profile development. Figure 1 is an example of the PCT Development Station interface for Intel® processors.

In addition to the changes in the interface we have also added the ability to use the product in a Network Campus or Network WorldWide setting. To find out more about the Network Campus and Network WorldWide portion of this tool please refer to

http://www.asset-intertech.com/download/PCT_Networking_features.pdf.

The PCT Development Station consists of the Toolkit Software. In order to control the UUT (Unit Under Test) from the software you will also need the controlling hardware. Refer to figure on next page for a description of the hardware components. ThePro software components consist of the following elements:

- Developer Mode – This is the area where test are developed using ASSET's Test Script Language (TSL). This easy to learn and easy to use language is rich in features with over 200 built-in functions. The built-in functions provide pin-level diagnostics, detail in the event of an error. The script edit is an editor designed for the TSL language and provides context sensitive help along with many other editing

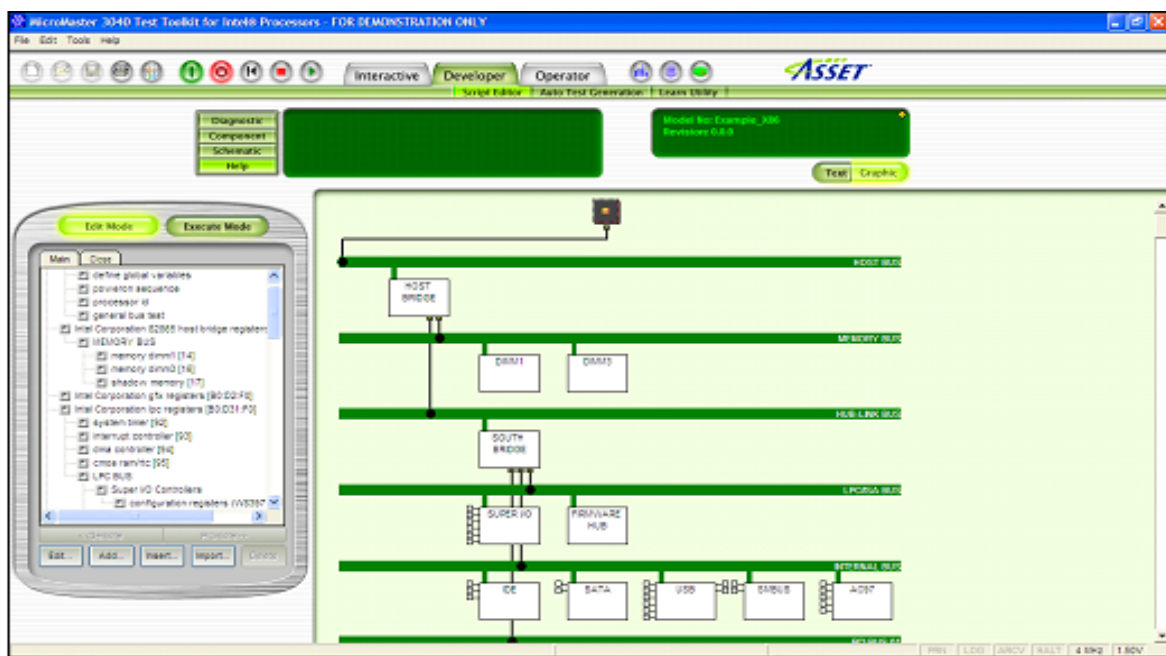


Figure 1

features. Test development can be challenging and the Automatic Test Generation (ATG) tool has been developed to assist the use in just such a challenge. The ATG library supports over 1500 devices and with just a little bit of knowledge the user can develop a basic test in just a few minutes. The developer would not be complete without the ability to learn what the BIOS has done so the ATG and the Learn utilities take advantage of what has already been developed and convert that knowledge into TSL code.

- Interactive Mode – This portion of the tool is where the test developer can test ideas and theories about why the UUT is failing a particular test. The tests that are built into this mode are the same tests that are in the Developer Mode thus allowing the engineer to test ideas prior to development of the code. This is also the area where further diagnosis can be conducted where the use of other test tools are required like an oscilloscope. The user can also conduct interactive test of flash devices and a host of other digital logic. This portion of the interface is not just limited to test development but can facilitate debugging on the production line or help conduct in

the field repairs.

- Operator Mode – This is the area of the user interface which provides the test engineer the ability to see what the production operator sees and test out operator interactions for the test profiles he has developed. This is designed so a lesser skilled person can run complex tests generated by the engineering group and not feel intimidated by the complexity behind the scenes.

For complete description of the hardware components please refer to

http://www.asset-intertech.com/download/PCT_debug_hardware.pdf

Processor-Controlled Test Hardware Components List



Note* Items 1 and 8 are not provided by ASSET

- 1 Control PC *
- 2 PCI -200EJ Controller
- 3 PCI to Processor POD Cable
- 4 Processor POD
- 5 I/O Emulation Unit
- 6 I/O Plug-in Cards
- 7 I/O Feedback Cable
- 8 UUT